

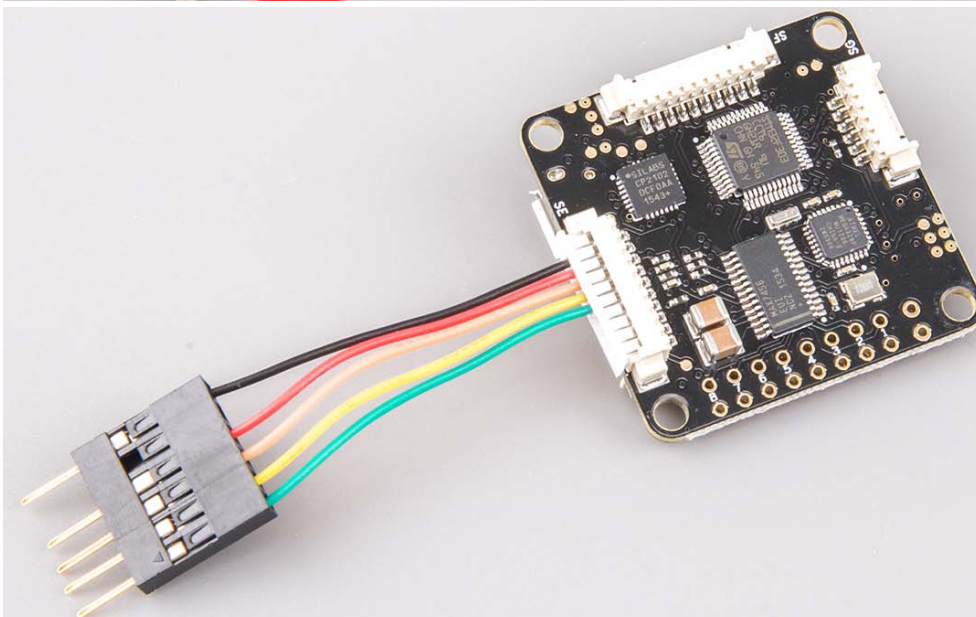
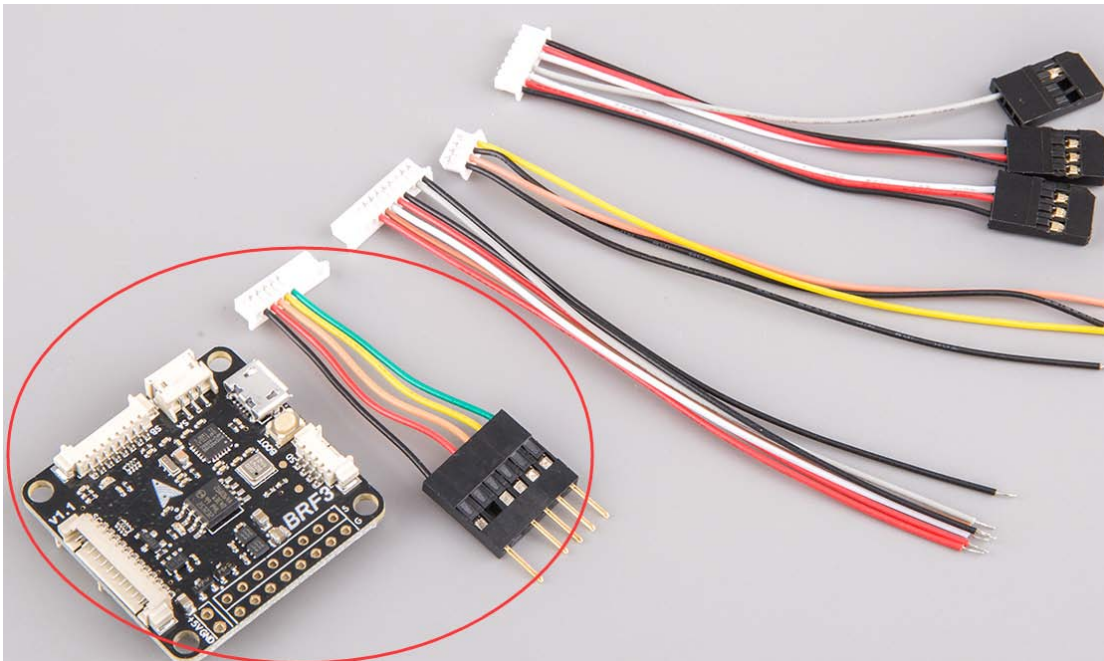
BEEROTOR F3 OSD Set:

- Don't connect any power to the quad.
- Don't connect USB on F3 to PC.
- Install FT232 VCP driver and connect FTDI to SE port via FTDI adapter cable.
- Download MWOSD GUI zip file and open it.
- Select the right COM port and wait for reading OSD configuration parameters.
- Learn how to modify the parameters, font and write back to the mcu of OSD.

Note: When using PDB or external 5V power supply, OSD circuit keep working and communicate with the F303. If you plug a USB cable, the OSD circuit is cut off powered to ensure that the FC can communicate with computer.

When debugging OSD, do not connect the battery/USB cable and just plug a FTDI tool via the FTDI adapter cable. At this time only OSD circuit to work independently.

Connect OSD to PC:



Don't connect any power to the quad and FC.

Don't connect USB on F3 to PC.

Connect FTDI to SE port via FTDI adapter cable to PC



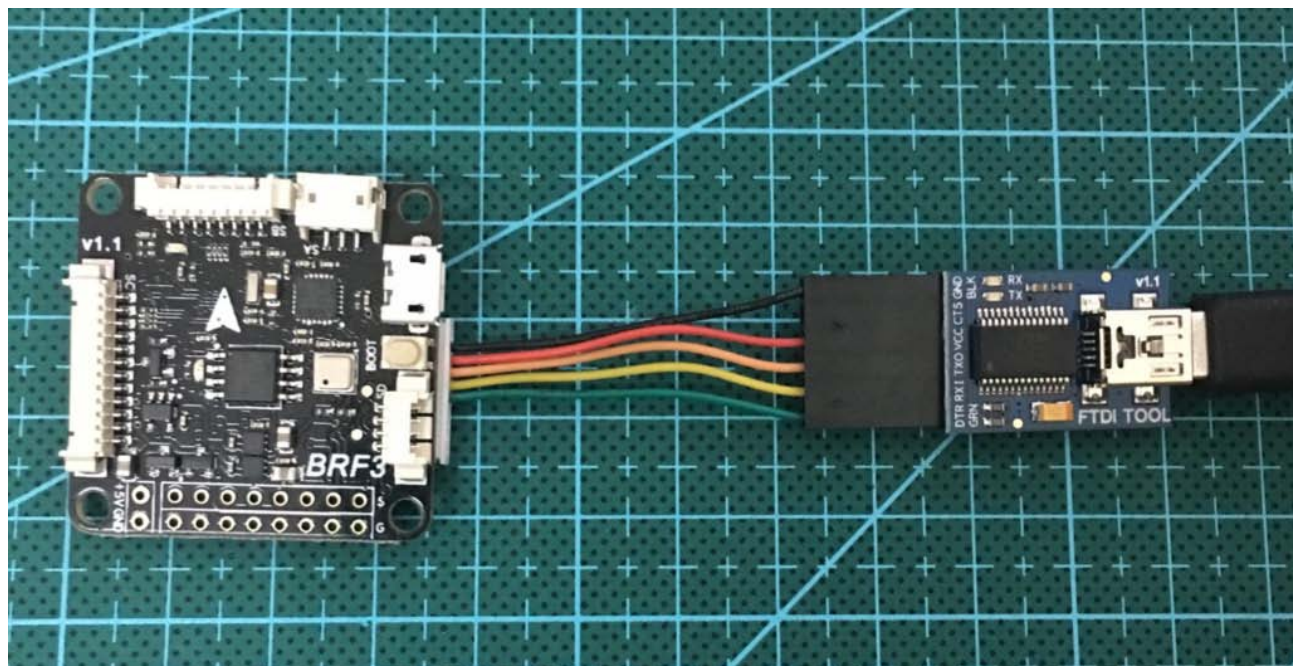
Select the right COM port and wait for reading OSD configuration parameters.

If you want reflash OSD Firmware:

Don't connect any power to the quad and FC.

Don't connect USB on F3 to PC.

Connect FTDI to SE port via FTDI adapter cable to PC

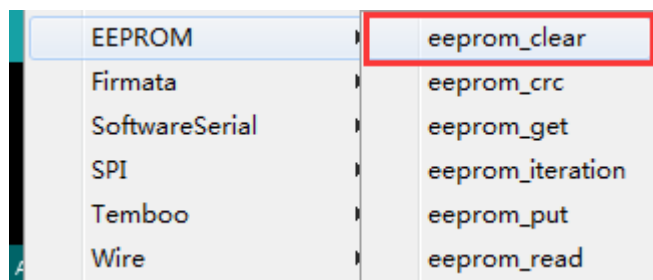


1. Download MWOSD GUI zip file on www.mwosd.com

2. Download Arduino on www.arduino.cc

Open the Arduino, Select the right COM port,

1. EEPROM_Clear



2. Please upload the MW_OSD after eeprom_clear done.

3. Closed the Arduino after uploaded.

Then open MW_OSD GUI and contact OSD to PC follow above.